



User Manual



www.falcontechology.co.uk

Content

Product Introduction.....	2
Notice Before Use.....	2
Structure.....	3
Function.....	3~4
Operation Guide.....	4~5
Recording Video.....	5
Taking pictures.....	6
Playback.....	6~7
Settings.....	8~13
FAQ.....	14

Product Introduction

Thank you for purchasing the Falcon Dash Camera. To get the best out of your new camera please read this instruction manual before use.

Notice Before Use

1. Please use a high-speed class 10 MicroSD card with a maximum size of 32GB.
2. You must format memory card when you use the camera for the first time.
3. Makes sure you insert the MicroSD card the right way round to avoid damage to the camera or the card.
4. The camera is designed to be plugged in during use, the built in battery is to allow it to save the last recording when the power is disconnected. If the battery is very flat it may take a few minutes before the camera will turn on.
5. Please only use the original 5V power lead with this camera, using other leads may permanently damage the camera or cause it to malfunction.

STRUCTURE



FUNCTION

1. Cyclic Recording

Cyclic recording, sometimes called loop recording allows the camera to record until the card is full and then start to overwrite the oldest recordings (except locked recordings). We recommend setting this to 3 minutes which means the camera saves the recordings in 3 minute chunks.

2. Motion Detection

When motion detection is turned on the camera can detect movement in front of your car and start recording automatically. Note that this function will only work while the camera is connected to external power.

3. G-SENSOR

When the G-Sensor is enabled the camera will automatically lock the current recording (preventing it from being overwritten) if there is an external force like in an accident.

4. **Parking Wake**

When Parking Wake is enable the camera will automatically turn on and start recording if an impact to the car is detected such as someone bumping into the car when parked. The G-Sensor should be turned on at the most sensitive setting. Note that this function will only work while the camera is connected to external power.


Operation Guide

1. **Power On/Off:** Long press the power button for around 2~3 seconds to turn on & off. If a MicroSD card is inserted it will start recording automatically when powered on.
2. **Start/Stop recording:** In video mode, short press the OK button to manually stop or start recording.
3. **Photo :** In photo mode, short press the OK button to take a still photo.
4. **Playback:** In playback mode, short press the OK button to play the video.
5. **Power/OK button:** In video mode, photo mode or playback mode, short press the menu button enter the menu, short press up/down to browse and short press the power button to confirm.
6. **Up button:** In the menu press to move up. In standby mode a long press will turn motion detection on/off. In playback mode a short press will rewind.
7. **Down button:** In the menu press to move down.
In video mode short press to turn audio on/off. (Note: the setting will be saved automatically, no need to set again next time) In playback mode short press to fast forward.


8. **Menu:** In standby mode (camera not recording), short press the menu button to enter the main menu setting, short press UP/DOWN buttons to choose the option you need and short press the Power/OK button to confirm. Short press the Menu button to exit the menu.

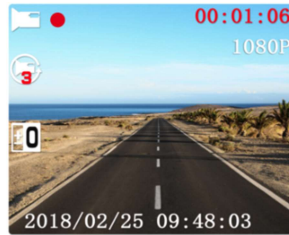
9. **Mode button:** In standby mode (camera not recording), short press the mode button to switch between the different modes (Video/Photo/Playback).

Recording video

In Video mode, in the upper left corner of the screen the  icon will be displayed. Press the Power/OK button to start recording.




REC  icon will appear flashing in the upper left corner. To stop recording press the Power/OK button.



Taking pictures

1. Press Mode (M) button.

In the upper left corner of the screen,  icon will be displayed.



2. Press the Power/OK button to take a picture.

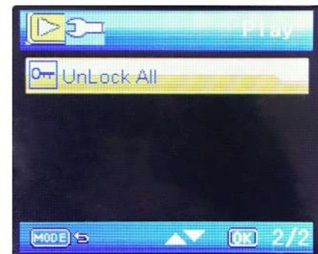
Note: Hold the camera steady when taking pictures, otherwise the pictures will come out blurry.

Playback

1. **Browsing files:** Press the Mode (M) button to switch to playback mode, browse files using the UP/DOWN buttons.
To play a file, press the Power/OK button.
2. **Delete and Protect:** In playback mode, press the Menu button and select "Delete, you will have two options: "delete ?" to delete the selected file, and "delete all?" to delete all the files on the memory card (except protected files).
Press the Power/OK button to select and confirm.



In playback mode, press the Menu button and select "lock this" to protect the selected file from being overwritten or "unlock this" to unlock the selected files. Select "unlock all" to unlock all the protected files on the memory card.



SETTINGS

General settings

In any mode, press the Menu button twice, to open the general settings menu.



Time Setting	Set date and time
Auto Power Off	Select the automatic power off delay time
Screen savers	Select the screen turning off delay time
Beep sound	Activate/Deactivate sounds when pressing buttons

Browse settings using the UP/DOWN buttons and press the Power/OK button to edit and confirm a setting.



Language	Select the menu display language
Flicker	50 Hz or 60 Hz
Format	Select to format the memory card
Reset System	Select to revert to factory settings



Version	Select to check the system firmware version
---------	---

Video settings

In video mode, press the Menu button.



Resolution	Select recording resolution
Cyclic Record	Select recording split duration or deactivate the cyclic recording function
EV	Adjust image exposure level
Motion Detection	Activate/Deactivate motion detection trigger recording





Parking wake	Adjust sensitivity level for the parking mode
Audio	Activate/Deactivate recording with sound
Date Tag	Activate/Deactivate date stamp on the recording
G Sensor	Adjust sensitivity level for the gravity sensor

Photo settings

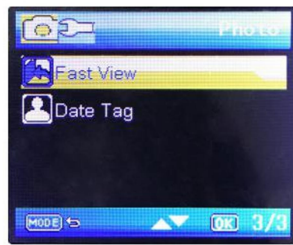
In photo mode, press the Menu button.



Resolution	Adjust photo resolution
Sequence	Activate/Deactivate burst shooting mode
Image quality	Adjust image quality
Sharpness	Adjust sharpness level



White Balance	Adjust the white balance according to the environment
ISO	Select light sensitivity level
EV	Adjust image exposure level
Anti-Shaking	Activate / Deactivate image stabilizing



Fast View	Select preview duration after taking a shot
Date Tag	Activate/Deactivate date and time stamp on the photo

FAQ:**Why does my camera indicate "SD card Full" ?**

1) Check that your memory card is a quality high speed Class 10 memory card. (Note: max card size is 32GB)

2) Check the Cyclic/Loop recording this function is turned on.

3) Check if the G-Sensor is on, if the G-sensor is triggered the current file is locked and cannot be overwritten, if there are too many locked files the card will be full. Reduce the G-Sensor sensitivity or turn it off.
You can format the card manually to delete all files on the card.

Why does the camera automatically turn on & off continuously?

Check if the Parking Monitor is enabled. If Parking Monitor is on the will turn on when it detects any shaking or movement and then turn off when it stops.

Also check if the Motion Detection function is enabled, if it is on the camera will automatically start recording when it detects movement in front of it.

Why does the camera freeze while recording?

Please check if your memory card is quality high speed Class 10 memory card (max 32GB). Slower cards will cause freezing while recording in higher resolutions.
If the problem persists try a different card.