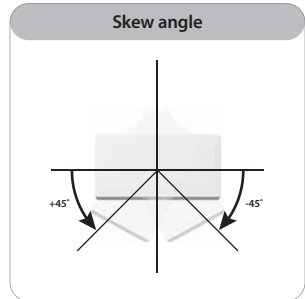
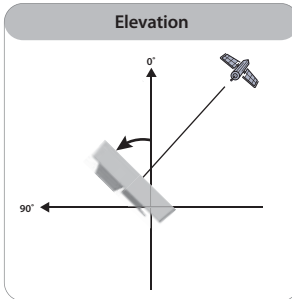
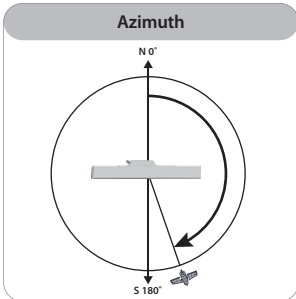


How to use?

Step 1 : General Information

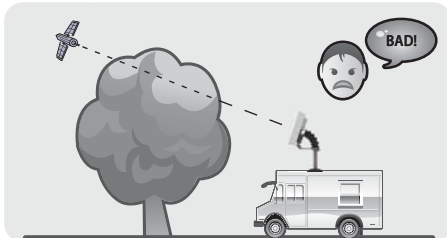
What are the Azimuth, Elevation and Skew Angle?



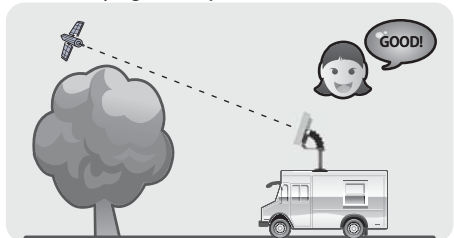
Surrounding environment and Antenna pointing menu

Make sure that there are no obstacles in front of the dish which can decrease the signal reception quality, such as buildings or trees (You may keep in mind that trees will grow and may block the signal).

Bad Quality Signal Reception



Good Quality Signal Reception

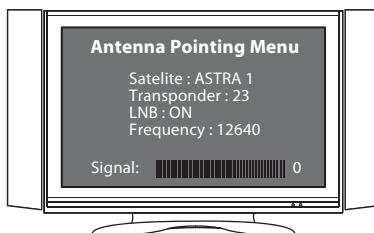


Once all connected, turn on the TV and the Satellite receiver.

Select the Antenna Pointing Menu on your set top box.

You can check signal level on your TV. (Ensure that to choose "LNB : ON")

The signal level and quality is indicated on the TV screen and will fluctuate and change color according to the adjustment & movement of the antenna while you are pointing & finding (azimuth, elevation angle). The level indicates the power of the signal and the color is the signal reception quality from the chosen satellite.

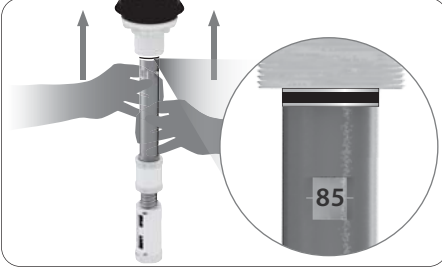


Step 2 : Adjust Azimuth, Elevation and Skew angle

1. Preparation

Select the target satellite (Check the Elevation and Skew angle)

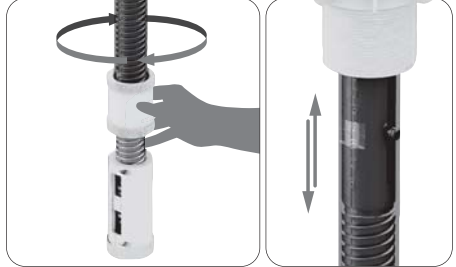
2. Lift the antenna pole



Lift up the antenna pole up to red line to secure enough adjustable space on the roof.

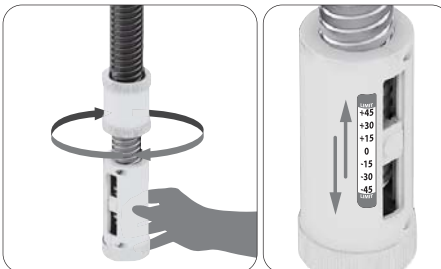
Do not push up the antenna by holding elevation control knob and skew control knob.

3. Adjust elevation



Turn the elevation control knob according to the target satellite elevation angle.

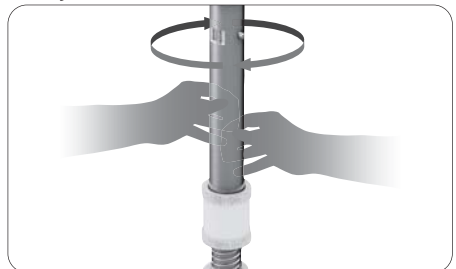
4. Adjust skew



Turn the skew control knob according to the target satellite skew angle.

Turn the skew control knob should be limited up & down to marked red. Over lining causes failure.

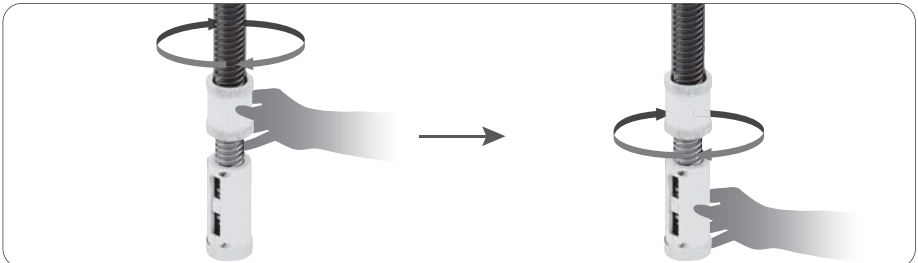
5. Adjust azimuth



5-1. Turn the azimuth control pole.

5-2. The signal level and quality is indicated on the TV screen. Please find and hold the pole at the position of the best signal.

6. Fine tuning

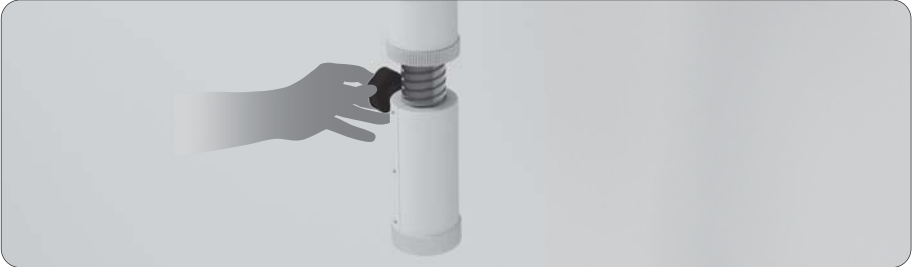


6-1. Slightly turn the elevation and skew control knob for fine tuning.

6-2. The level indicates the power of the signal and the color is the signal reception quality from the chosen satellite. Please find and hold the pole at the position of the best signal.

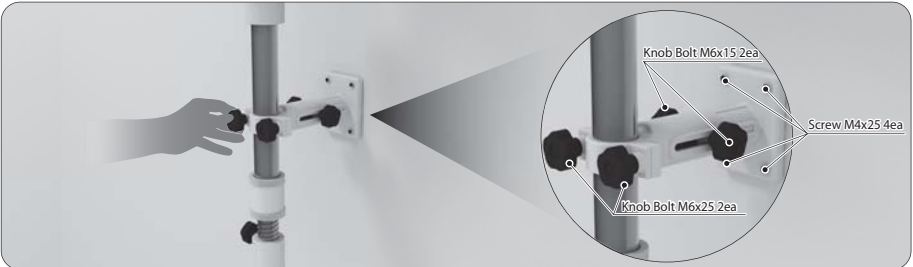
7. Fix Bracket

7-1. Fix skew control knob



Screw 'Knob Bolt' like the picture below And make skew control knob fixed.

7-2. Fix bracket on the wall

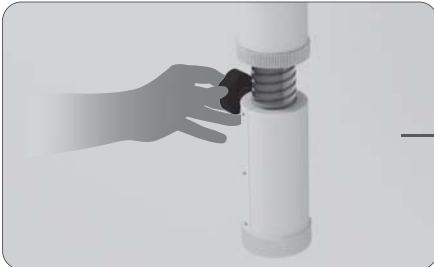


After adjusting azimuth, elevation and skew Fix bracket on the wall.

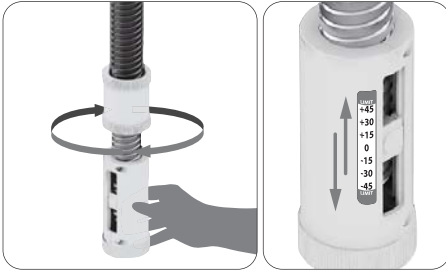
Home position

※ The dish must **be at HOME position before driving**

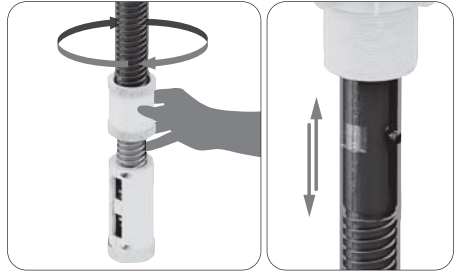
1. Screw off 'Knob Bolt' and both of 'Knob Bolt'.



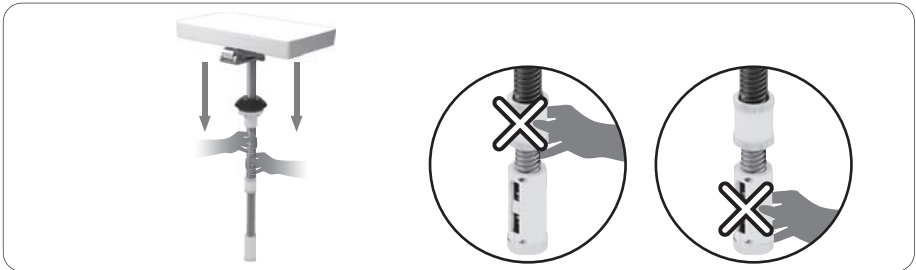
2. Set Skew angle back to 0°.



3. Set elevation back to 90°.



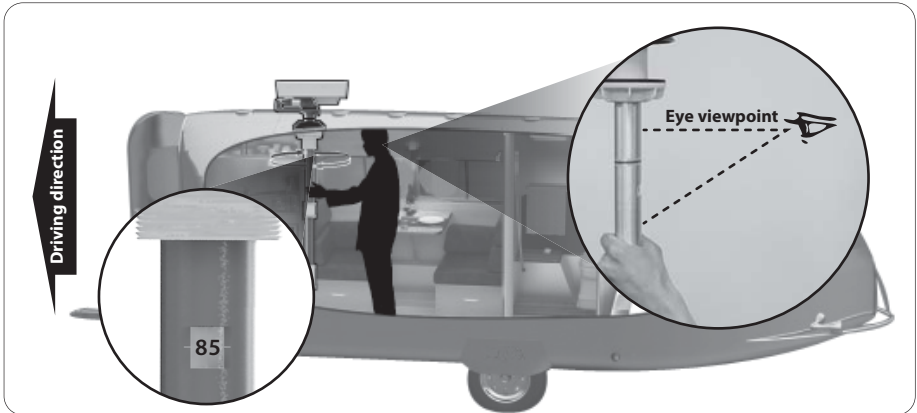
4. Down the antenna to the ground fully



Down the antenna to the ground fully with pole
(Do not pull down the antenna by holding elevation screw cap and skew screw cap)

Do not push up the antenna by holding elevation control knob and skew control knob.

5. Adjust azimuth



Return the antenna to home position.
Elevation indicator has to be faced to the center of vehicle rear to confirm that the azimuth is adjusted to right direction. (HOME position)