

Android box  
User Manual

# CONTENTS

<b>1</b>	<b>SAFE CAUTION</b> .....	<b>2</b>
<b>2</b>	<b>PRODUCT APPEARANCE</b> .....	<b>3</b>
<b>3</b>	<b>REMOTE CONTROL</b> .....	<b>5</b>
<b>4</b>	<b>BASIC OPERATIONS</b> .....	<b>6</b>
	3.1 CONNECT TO WI-FI NETWORKS .....	6
	3.2 FORGET A WI-FI NETWORK.....	7
	3.3 OPEN GALLERY .....	7
	3.5 OPEN MUSIC .....	8
	3.6 OPEN S LINK .....	8
	3.7 OPEN ALL APP.....	9
	3.8 OPEN BROWSER.....	9
	3.9 OPEN APP STORE .....	10
	3.9.1 BROWSE FOR APPLICATIONS.....	10
	3.9.2 SEARCH FOR APPLICATIONS .....	10
	3.9.3 DOWNLOAD AND INSTALL AN APPLICATION .....	11
	3.9.4 CREATE A GOOGLE CHECKOUT ACCOUNT .....	11
	3.9.5 MANAGING YOUR DOWNLOADS .....	11
<b>5</b>	<b>SYSTEM SETTING</b> .....	<b>12</b>
	4.1 DISPLAY SETTINGS .....	12
	4.2 SECURITY SETTINGS .....	12
	4.3 APPS SETTING .....	12
	4.4 BACKUP & RESET.....	13
	4.5 LANGUAGE & INPUT .....	13
	4.6 ABOUT MEIDABOX.....	13
<b>6</b>	<b>DVB SERVICE</b> .....	<b>14</b>
	5.1 CHANNEL MANAGER .....	14
	5.2 TIMER .....	14
	5.3 DTV SETTINGS.....	15
	5.4 PVR (PERSONAL VIDEO RECORD) .....	15
	5.5 INSTALLATION .....	16
	5.6 EPG.....	16
<b>7</b>	<b>TROUBLESHOOTING</b> .....	<b>17</b>
<b>8</b>	<b>SPECIFICATION</b> .....	<b>18</b>

# 1 Safe Caution



**NOTICE:** *To prevent fire and electric shock, do not expose this receiver to rain or moisture. In order to avoid any possible risk of electric shock, never attempt to open the unit. In case of the unit breaking down, repair of the unit should be carried out by qualified technicians. No part of this unit should be repaired by users.*

## **WARNING!**

- Presence of live parts inside the unit! Do not open. Risk of electric shock! No part should be repaired by users.
- The maintenance of the receiver should be carried out exclusively by qualified persons.
- If the power cord is damaged, it must be replaced or repaired by the manufacturer, its after-sales service, qualified electrician or persons of similar qualification in order to avoid possible danger.
- The product must be installed in accordance with national regulations.
- The used batteries must be disposed of safely. Throw them in appropriate rubbish bins in order to protect the environment.

## **Proper Installation**

- Place the receiver on a flat, firm and stable surface. Do not put it on a carpet or rug.
- Do not place the receiver on top of another device, such as an amplifier. This may lead to overheating.
- Do not put anything above the unit (for example, CDs or magazines).

## **Sufficient Ventilation**

- Place the receiver in a well-ventilated location to prevent accumulation of internal heat. Allow a gap of at least 10cm to the rear and the top of the unit, as well as a space of 5cm to both sides to avoid overheating.
- Do not obstruct any ventilation openings with items such as newspapers, tablecloths, curtains, etc.

## **Protecting the Receiver from High Temperatures, Humidity, Water and Dust**

- The receiver should not be exposed to dripping water or splashing.
- No objects filled with liquids, such as vases, shall be placed on the unit.
- Do not place any objects that might damage your unit near it (e.g. liquid filled objects or candles).
- Do not place any source of flames such as lit candles on the receiver.

## **Electricity Supply**

- Please unplug the receiver in case of prolonged non-use.
- If the power cord is damaged, it must be replaced or repaired by the manufacturer, its after-sales service, qualified electrician or similar qualifications to those to avoid possible danger.
- The plug must remain readily accessible after the installation of the product.

## 2 Product appearance

The pictures shows what our product looks like:

**Front panel:**



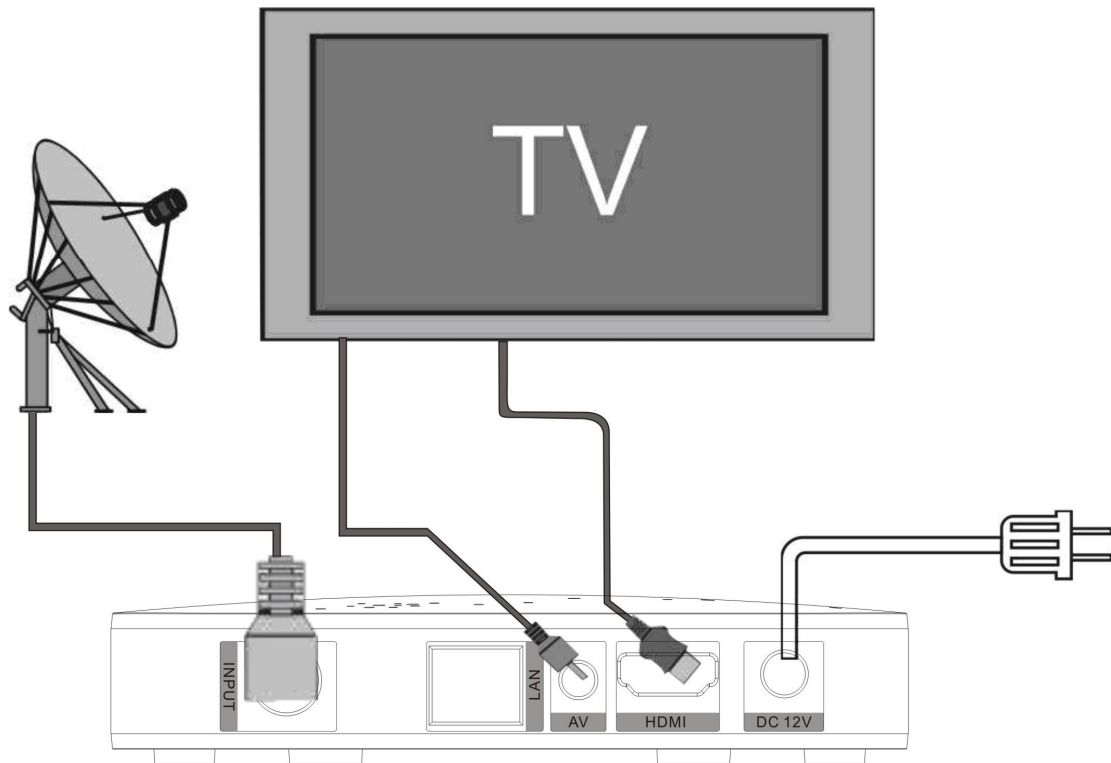
**Rear panel:**



***NOTICE: The pictures are for references only; please make the object as the standard.***

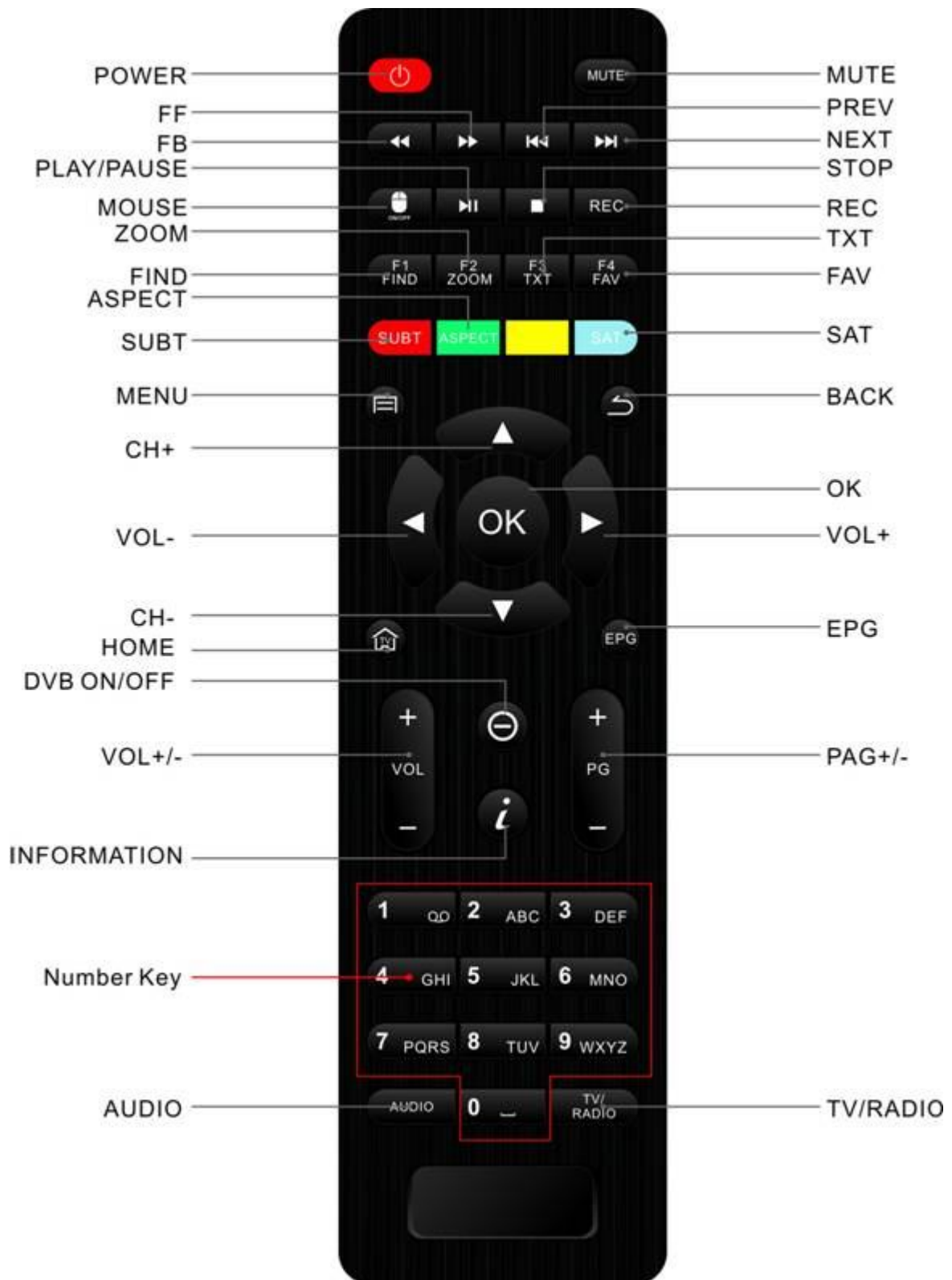
## Devices Connection

As shown, connect the interfaces on the television with the corresponding interfaces on the product (such as connect the product with TV sets through the HDMI cable), then after the power is connected, turn on the switch and you can use the product.



**NOTICE:** The picture is for references only, please make the object as the standard.

### 3 Remote control



**NOTICE:** The picture is for references only, please make the object as the standard.

## 4 Basic Operations

This guide describes how to use the Android platform

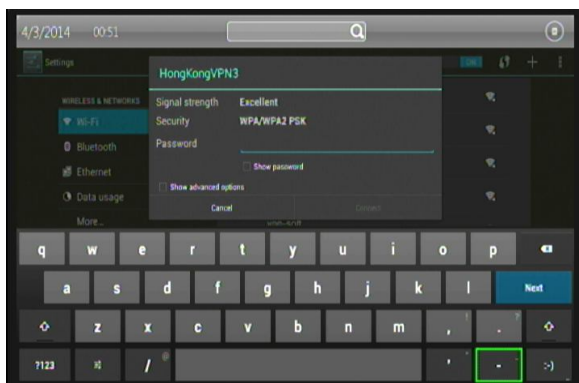


After you turn on your Box, Home opens. It's a unique launcher and designed by ourselves. The app icons you keep in the tray remain visible on every Home screen. All Apps icon in the center is permanent. Click it to see all your apps and widgets. The middle of your Home screen can hold app and widget icons, plus folders. To open an app, folder, or widget, Click its icon.

### 3.1 Connect to Wi-Fi networks

Wi-Fi is a wireless networking technology that can provide Internet access at distances of up to 100 meters, depending on the Wi-Fi router and your surroundings. To use Wi-Fi, you connect to a wireless access point, or "hotspot." Some hotspots are open and you can simply connect to them. Others implement security features that require other steps to set up, such as digital certificates or other ways to ensure that only authorized users can connect.

To extend the life of your battery between charges, turn off Wi-Fi when you're not using it. You can also set your device to disconnect automatically from Wi-Fi networks when it's sleeping.



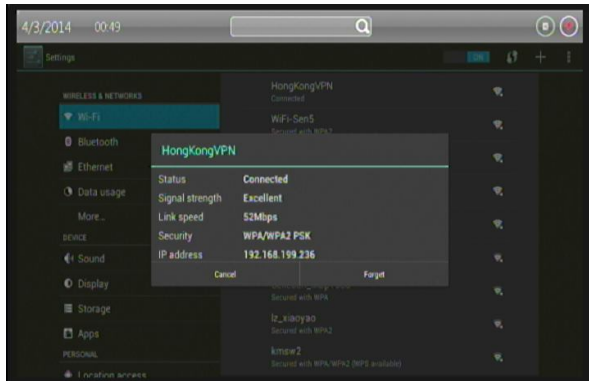
Turn Wi-Fi on and connect to a Wi-Fi network

If you're adding a Wi-Fi network when first setting up your device, Wi-Fi is turned on automatically.

- 1、 Click the Settings icon "setting" on a Home or All Apps screen.
- 2、 Click the icon More, then choose Wi-Fi.
- 3、 Slide the Wi-Fi switch to the On position. The device scans for available Wi-Fi networks and displays the names of those it finds. Secured networks are indicated with a Lock icon. If the device finds a network that you connected to previously, it connects to it.
- 4、 Click a network name to see more details or connect to it. If the network is secured, you're prompted to enter a password or other credentials. (Ask your network administrator for details. To modify a network's settings, Click & hold the network name.

### 3.2 Forget a Wi-Fi network

You can make the device forget about the details of a Wi-Fi network that you added; for example, if you don't want the tablet to connect to it automatically or if it's a network that you no longer use.



- 1、 Turn on Wi-Fi, if it's not already on.
  - 2、 In the Wi-Fi settings screen, Click the name of the network.
  - 3、 Click Forget in the dialog that opens.
- When you connect to a Wi-Fi network, the stick obtains a network address and other information it needs from the network, using the DHCP protocol.

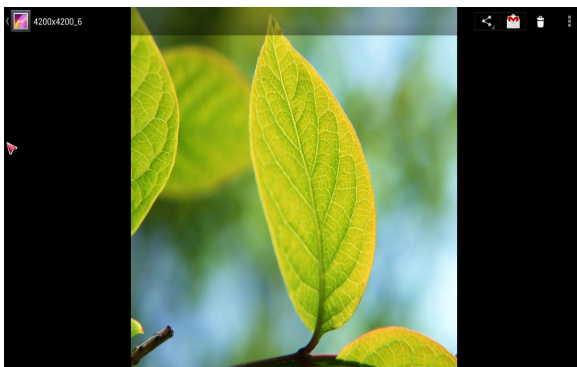
### 3.3 Open Gallery

Click the Gallery icon in the Launcher or on the Home screen.

Gallery presents the pictures on your SD card or USB storage (depending on your model of Stick), including those you've downloaded from the web or other locations.

Use Gallery to view pictures that you've taken with downloaded, copied onto your SD card or USB storage (depending on your model of stick), or that are stored in Picasa web albums. You can also edit the pictures on your stick and share them with friends.

View and browse pictures



Open a Gallery album and Click a picture.

Click to zoom in or out.

Turn the stick to view the picture in upright (portrait) or sideways (landscape) orientation. The picture is displayed (but not saved) in the new orientation.

Click the picture to view the Zoom and

other controls.

Click a Zoom icon, double-tap the screen, or pinch two fingers together or spread them apart to zoom in or out.

When the picture is zoomed in, drag the picture to view parts that are not in view.

Watch a slideshow of your pictures

Click a picture to view the controls and Click **Slideshow**. S Click a picture to end the slideshow.

Delete a picture

You can delete a picture from your SD card or USB storage. 1 Click a picture to view the controls and Click **Menu**. 2 Click Delete 3, Click **OK** in the dialog that opens.

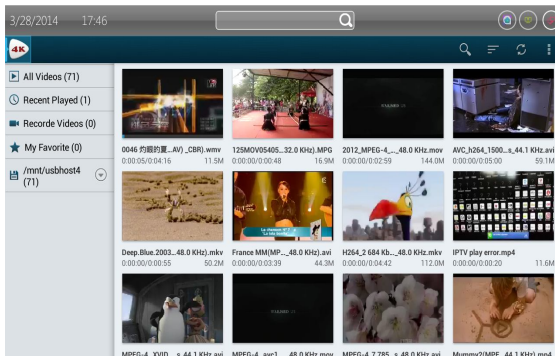
Opening Music and working with your library. After you've copied some music onto your SD card or USB storage, as described in "Transferring music files to your stick" on page 308, or



downloaded music from another source, you can open Music and see your library of music files, sorted in one of four ways.

### 3.4 Open video player

Click the video player icon in the Launcher or on the Home screen. Press OK key and you can see the screen like below:

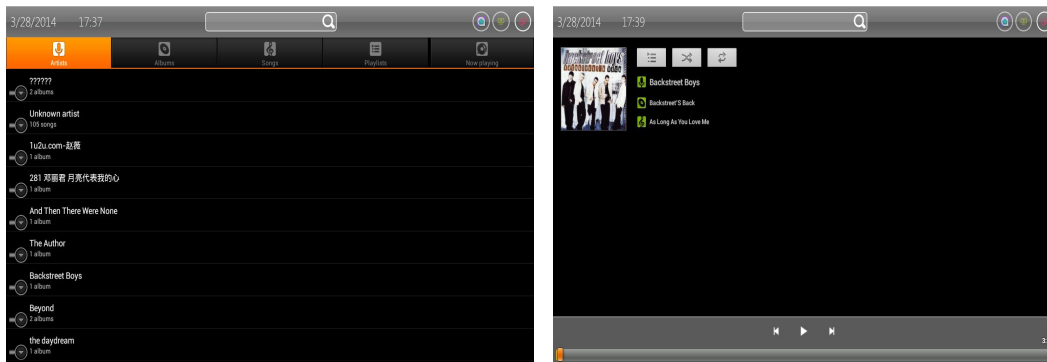


You can choose one of your videos and press OK key, then it will show you the video. Video player presents the video on your SD card or USB storage (depending on your model of Stick), including those you've downloaded from the web or other locations.

### 3.5 Open Music

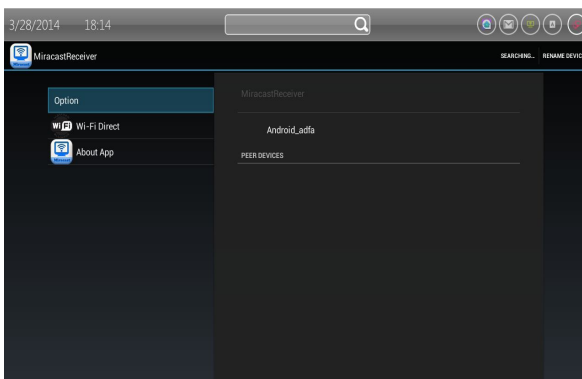
Click the Music icon in the Launcher or on the Home screen.

When you copy music to your SD card or USB storage, Music searches it for music files and builds a catalog of your music, based on information about each file that is stored in the file itself. This can take from a few seconds to several minutes, depending on the number of files. When the catalog is complete, the Music library screen opens, with tabs that you can click to view your music library organized by Artists, Albums, Songs, or Playlists.



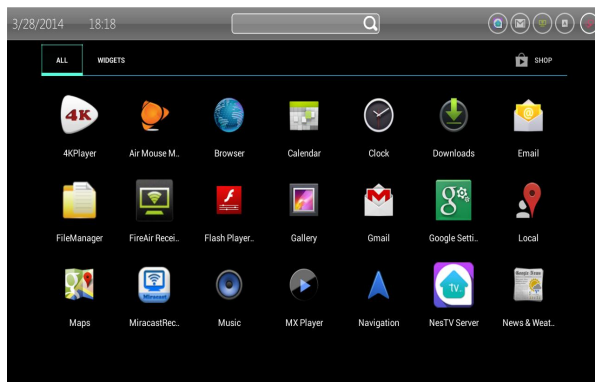
You can choose the song you want to listen and press OK key.

### 3.6 Open S Link



Click the s link icon in the Launcher or on the Home screen. You can see the screen like below, and you can connect your mobile phone with it conveniently.

### 3.7 Open All App



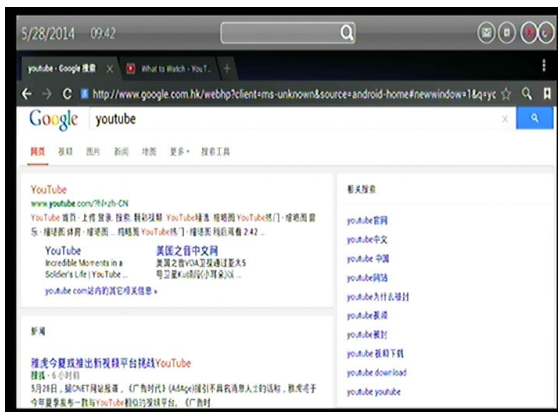
Click the video player icon in the Launcher or on the Home screen. You can see the screen like below, it shows all your apps. You can choose one of them and press OK key, then the app would be opened.

### 3.8 Open Browser

Click the Browser icon at the bottom of the Home screen or the application icon the Launcher. Browser also opens when you click a web link—for example, in an email or text message. When you open Browser, the last webpage you were viewing is displayed. If you have not used Browser recently, your home page opens.

The web address (URL) of the current page is displayed at the top of the window, unless a mobile site scrolls the URL bar off the top of the screen (if so, just drag the page down to bring the URL bar into view).

Some sites scroll the URL bar off the top of the screen, but you can drag the page down or press **Menu** to see it again.



Open a webpage or search the web. Click the URL box at the top of the Browser screen. If the URL box isn't visible, press Menu or just drag the page down until the URL box comes into view. Enter the address (URL) of a webpage. Or enter terms you want to search for. As you enter text, your web search engine makes suggestions of webpages and queries. You can set the web search engine you want to use.

Click a suggestion or enter an address and Click the arrow icon that webpage opens.

Refresh the current page

Press Menu and Click **Refresh**. The webpage is reopened, updating any content that has changed.

Stop opening a page

If a webpage is taking a long time to open, or if you change your mind, you can stop it from opening.

Click the Cancel icon to the right of the URL. OR Press Menu and Click **Stop**.

Get more information about the current page

Press Menu and Click Page info dialog opens with the page's title and full address (URL).

Set your home page

Your home page opens when you open a new Browser window, and when you start Browser

after restarting your stick or after not using it for a while.

- 1、 Browse to the page you want to set as your home page.
- 2、 Press Menu and Click **Settings > Set home page.**
- 3、 Click Use current page. Or enter a different page's address (URL).
- 4、 Click **OK** If you prefer to open new Browser windows without opening a webpage by default, leave this field blank. This can make new Browser windows open more quickly.

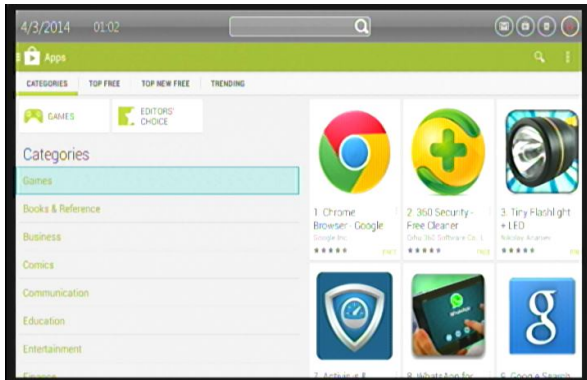
### 3.9 Open App Store

Click the App Store icon in the Launcher or on the Home screen.

When you open Android App Store for the first time, you must read and accept the terms of service to continue.

#### 3.9.1 Browse for applications

You can browse applications by category and sort them in different ways.



1、 On the Android Market home page, Click a top-level category, such as Apps or Games.

Click a subcategory to view its list of applications.

2、 Scroll to view subcategories and Click the one you want to explore.

Click to view top paid, top free, or the most recent applications in this subcategory. Click an application to open its details screen.

- 3、 Click Top paid, Top free, or Just in to further sort the subcategory.

#### 3.9.2 Search for applications

1、 Click the Search icon at the top right of the screen

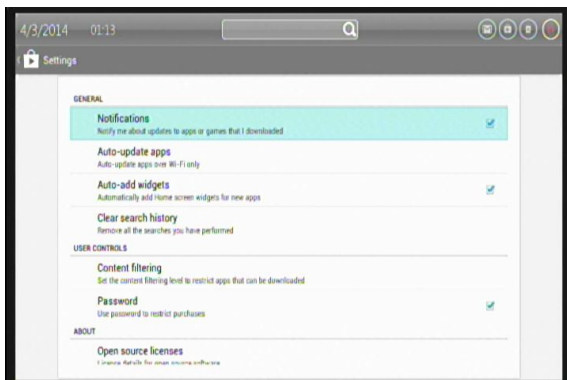
2、 Enter what you want to search for and Click Search again. You can enter all or part of an

application's name or description, or the developer's name you want to search for. When you find an application you like, you can install it on your stick.

3、 Click a search result to open that application's details screen.

The details screen describes the application and contains buttons for downloading the application and performing other tasks.

You can also Press Menu and enter the Setting



### 3.9.3 Download and install an application

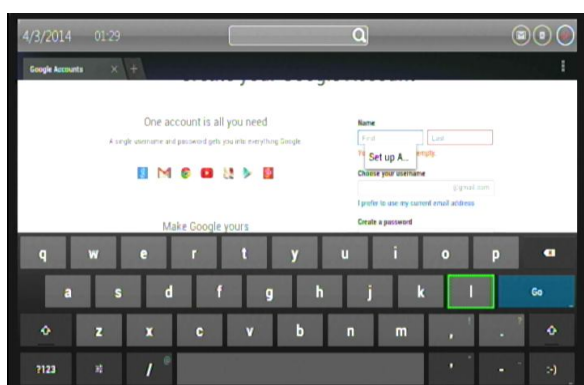


Find an application you want and open its details screen.

In the application's details screen, you can read more about the application including its cost, rating and user comments, and information about the developer.

Click to download and install the application. (If it's a paid application, the button is labeled with the price.)

### 3.9.4 Create a Google Checkout account



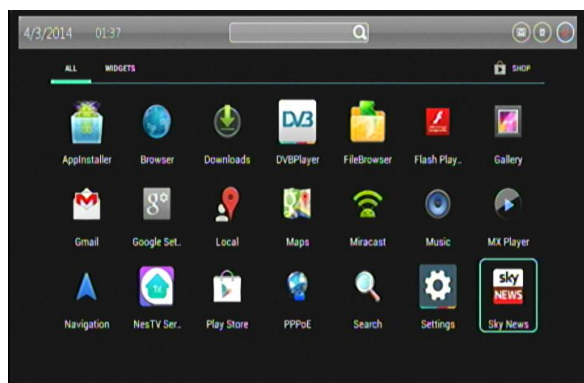
You can pay for the items you purchase from App Store with a Google Checkout account. You can set one up the first time you purchase an item on App Store, or ahead of time in a web browser.

In a web browser, go to <http://checkout.google.com> to establish a Google Checkout account.

OR The first time you use your stick to buy an item from Android Market, when you're prompted to enter your billing information, you can set up a Google Checkout account.

Warning! When you've used Google Checkout once to purchase an application from App Store, the stick remembers your password, so you don't need to enter it the next time. For this reason, you should secure your stick to prevent others from using it without your permission.

### 3.9.5 Managing your downloads



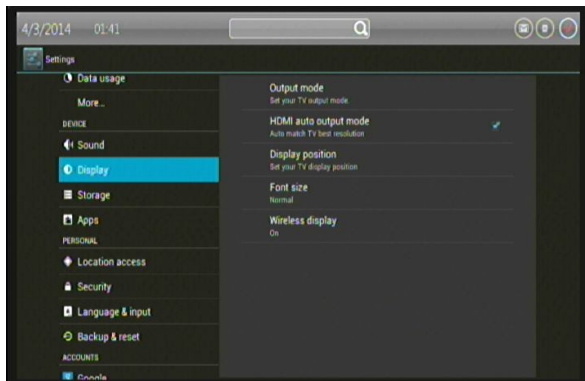
After you've downloaded and installed an application, you can rate it, view it in a list with your other downloaded applications, and configure it to update itself automatically, and so on.

View your downloaded applications  
You can view a list of the applications you've downloaded from App Store, and use the list for a number of purposes.

On the home screen, press All App icon and you can see all your apps.

## 5 System setting

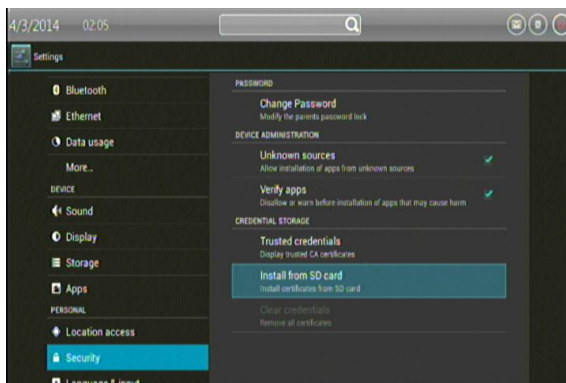
### 4.1 Display settings



Use the Display settings you can set your TV mode, HDMI auto output mode, Display position, Font size and Wireless display.

### 4.2 security settings

In the security settings, there are PASSWORD, DEVICE ADMINISTRATION and CREDENTIAL STORAGE.



You can modify the parent's password lock in the section of PASSWORD.

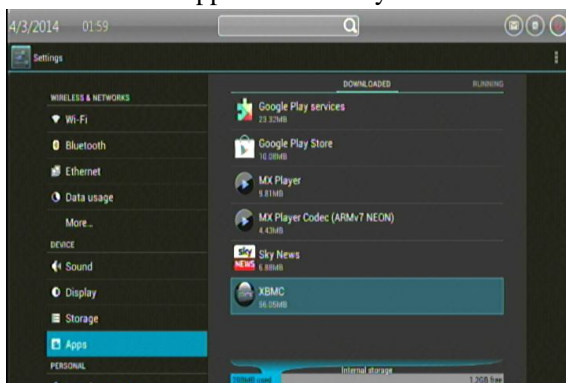
In the section of DEVICE ADMINISTRATION, you can choose whether allow installation of apps from unknown sources or not, and whether disallow or warn before installation of apps that may cause harm or not.

Install from SD card if your stick uses a removable SD card to store user files, Click

to install a secure certificate from an SD card. Install from USB storage if your stick uses internal USB storage for user files, Click to install a secure certificate from USB storage.

### 4.3 Apps setting

You use the Apps setting to view details about the applications installed on your stick, to manage their data, to force them to stop if they misbehave, and to set whether you want to permit installation of applications that you obtain from web sites and email.



Applications settings screen

Unknown sources Check to permit installation of applications that you obtain from web sites, email, or other locations other than Android Market.

Warning! To protect your stick and personal data, download applications only from trusted sources, such as Android Market.

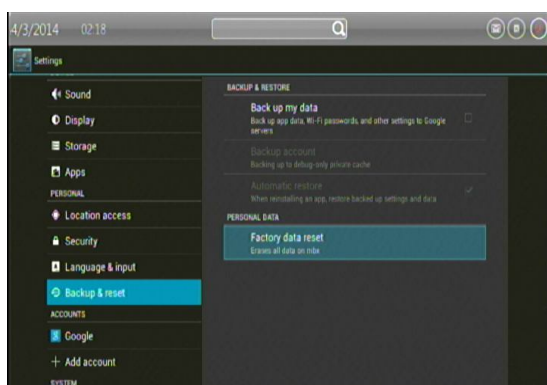
Manage applications Opens a list of all the

applications and other software installed on your stick, along with their sizes and tools for managing them.

Running services opens a list of applications, processes, and services, services that are currently running or are cached.

Storage use opens a list of all applications on your stick with information about the storage they use.

#### 4.4 Backup & reset

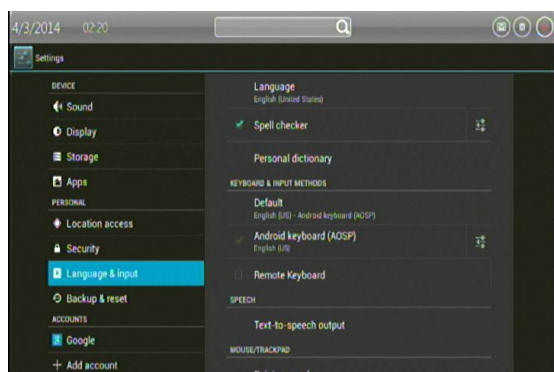


##### Factory data reset

Opens a dialog where you can erase all of your personal data from internal stick storage, including information about your Google Account, any other accounts, your system and application settings, and any downloaded applications. Resetting the stick does not erase any system software updates you've downloaded. Also includes a checkbox to erase your stick's USB storage or SD card

(depending on your model of stick), which can contain files you've downloaded or copied there, such as music or photos. If you reset the stick in this way, the next time you turn on your stick you're prompted to reenter the same kind of information as when you first started Android

#### 4.5 Language & input

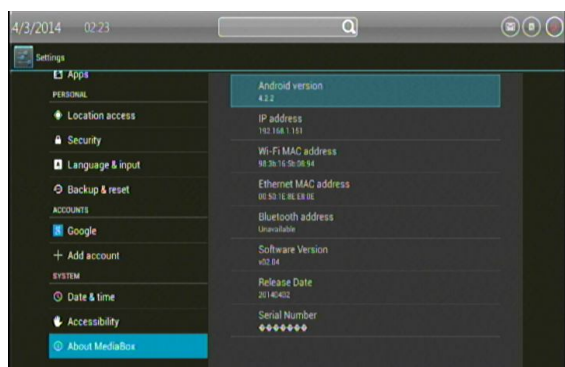


Use the Language & input to select the language for the text on your stick and for configuring the onscreen keyboard, including words that you've added to its dictionary.

##### Language & Keyboard screen

Select language opens the Language screen, where you can select the language to use for the text on your stick.

#### 4.6 About MeidaBox



System updates Opens a screen that reports on the availability of Android system software updates.

Status Opens the Status screen with a long list of information about your battery, mobile network connection, and other details.

Battery use opens a list of the applications and

operating system components you have used since you last charged the stick, sorted by the amount of power they have used.

Legal information opens a screen where you can obtain legal information about the software included with your stick.

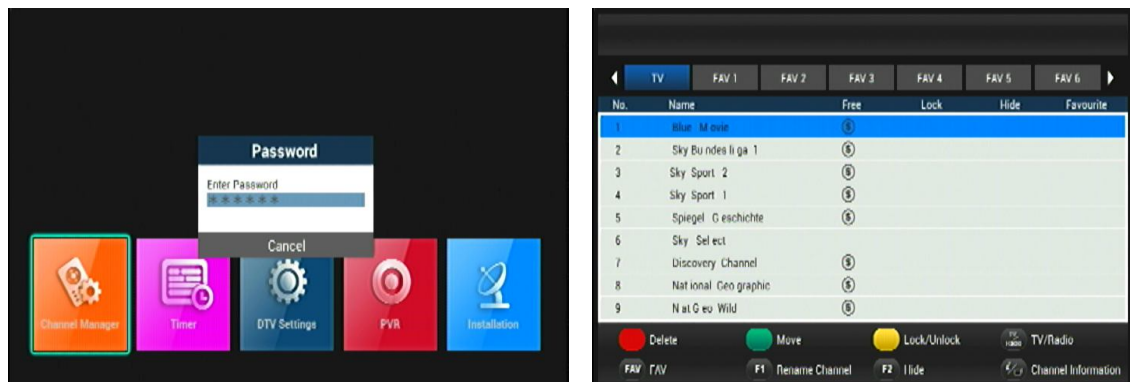
## 6 DVB Service

DVB Service running automatic while turn on the receiver. DVB APP shortcut is also available on home page. DVB service would be turn on/off on the remote control (Refer to Remote Control instruction).



## 5.1 Channel Manager

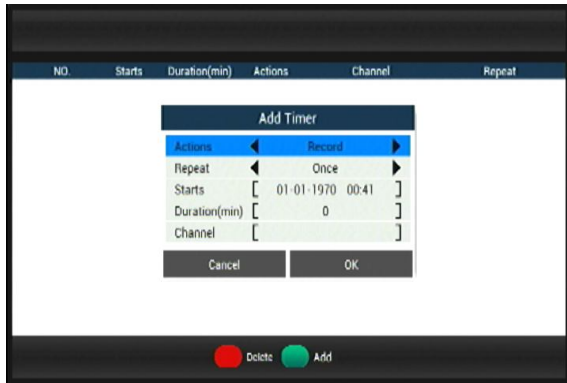
Channel manager support delete channel, move channel, hide channel, lock/unlock channel and rename channel. 16 FAV groups are also available in channel manager.



The default password of channel manager is 000000. All channel manage operation are available in on one page.

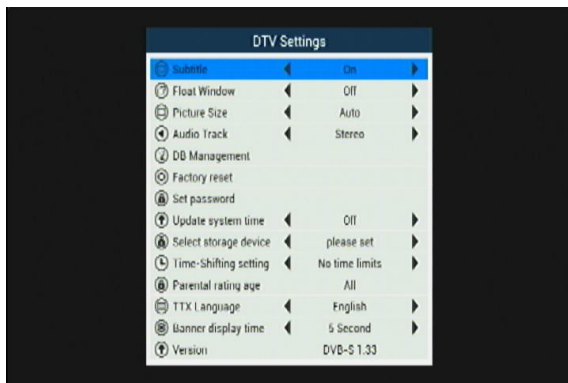
## 5.2 Timer

Timer support sets records of the show, like below. You can choose what time to start and the duration time. Before this, of course, you must ensure your USB/SD card/ hard drive is connected to the Box and its storage capacity would be sufficient to store the recorded TV programs.



When you press the Timer icon, then press the Green key to add, it shows like below. After you set it up, press OK key and it would begin to record TV programs.

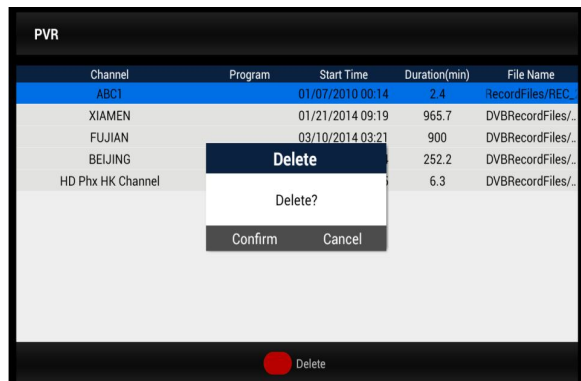
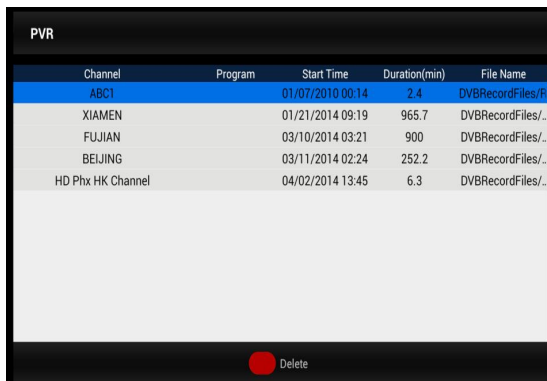
### 5.3 DTV Settings



DTV settings support configures the entire DTV base parameter Subtitle, Teletext, Audio track, Picture size, USB storage device etc...

### 5.4 PVR (Personal Video Record)

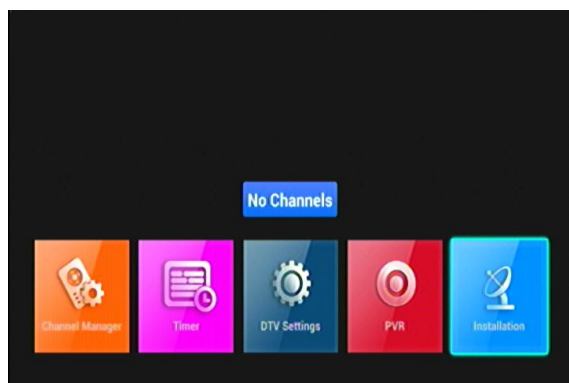
The receiver support instant PVR, timer PVR and EPG booking PVR. Please configure the storage device in DTV settings before start PVR.



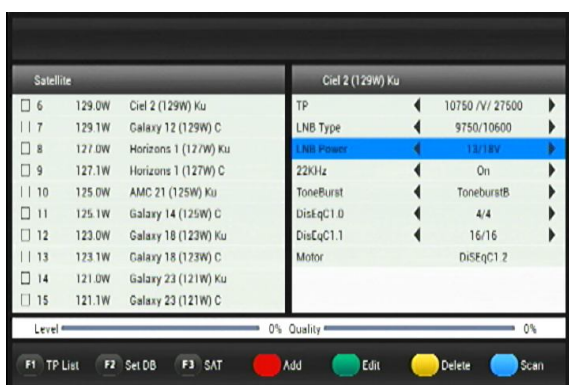
The user could manage recorded files; you can delete the files you've recorded by pressing the RED key.



## 5.5 Installation



(1) Press MENU key to show DVB service main menu then move cursor to [Installation] by press Left/Right key. Press OK to display Installation page.

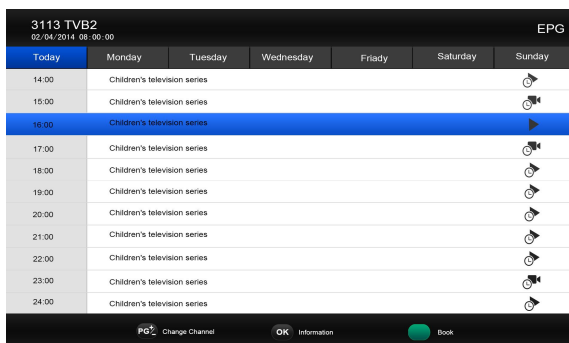


(2) You could configure LNB, 0/22KHz, ToneBurst, DisEqC1.0/1.1/1.2, Motor, USALS, UniCable, MDU etc... and change (Add, Edit and Delete) satellite, TP then search channel. The receiver support Auto search, Manual search, Blind scan and Network search etc...



(3) Press OK key to display option menu. Press UP/Down key to move cursor then press OK key to confirm and back to preview menu.

## 5.6 EPG



The receiver support 7 days EPG. Press Left/Right, Up/Down key to look for EPG in the next 7 days, press OK key to reserve play program or record program. Press OK key to get detail information of the program.

**NOTICE:** All the Instructions and pictures here are for reference only, please make the product you have as the standard and refer to the actual items.

## 7 Troubleshooting

### 1、 No signal on the HDTV

- Check if the HDMI cable is securely connected.
- Check if you have selected the correct HDMI input on your HDTV.
- Check the antenna cable, replace the cable, or connect the cable to the receiver tightly.
- Set the values of the tuner parameters correctly in the installation menu.
- Check the antenna connections.

### 2、 Cannot turn on your product.

- Check if the power connector has completely plugged into the DC socket of your TV.
- Check if the power supply is stable.

### 3、 Cannot connect to network

- Make sure the network cable is securely connected and the Ethernet work well.
- Make sure Wi-Fi network is connected and the security key for the encrypted network is correct.
- Make sure you select the correct IP address settings.

### 4、 Some HDTVs cannot display the entire picture

- Set up the screen ratio on your HDTV as automatic.
- On your HDTV, go to Menu >Screen >Press arrow buttons to select the ratio type > Choose automatically display the entire screen.

### 5、 The remote control does not work

- Make sure the batteries are good and they are inserted correctly in the remote control.
- Make sure no objects block the path between the remote control and the signal sensor area on the product.
- Make sure the distance between the remote control and the box is no more than 5 meters.
- Check the batteries for power, and if exhausted replace the batteries in the remote control.

### 6、 No picture or sound

- Check if the Audio/ Video output connection from the product to TV correctly.
- Press the MUTE button Turn TV on.

## 8 Specification

<b>Hardware</b>	
Chipset	AMLOGIC 8726MX-B Dual Core Cortex-A9 1.5GHz
RAM	DDR3 1G
Flash	eMMC 4G
<b>Tuner</b>	
Demodulator Mode	QPSK,8PSK
Frequency Range	950~2150MHz
<b>Video</b>	
Video Decoding	ISO/IEC 11172-2 MPEG1
	ISO/IEC 13818-2 MPEG2 MP @ ML and MP @ HL
	ISO/IEC 14496 MPEG4 Compliant Support SP @ L3 to ASP @ L5
	ISO/IEC 14496-10 AVC high profile @ level 4.1 main profile @ level 4.1
Video Output	CVBS(video format @ 576i or 480p)
	HDMI 1.3(video format default @ Auto), Support HDCP
Aspect Ratio	4:3 16:9
Video resolution	1080p/i 720p 576i 480p
<b>Audio</b>	
Audio Decoding	Dolby Digital/Digital Plus, DTS,WMA,WMA Pro,WMV,MEPG,AAC,HE-AAC,OGG,OGA,FLAC,ALAC,Ape,M4A, RM,MPEG-1 layer1/2, MPEG-2 Layer II
Audio mode	Mono/Stereo/Left/Right
<b>PVR Function</b>	
Record	Instant Record and Timer Record
	EPG Timer Record
Timeshift	Support Timeshift on/off setting in Menu
PVR Operation	Play/Pause/Stop/Step
	Fast Forward/Fast Backward 2/4/8/16/32
File System	Support NTFS, FAT32, EXT3, EXT4
<b>Power</b>	
DC Input Range	12V 1.5A
Power Consumption	Maximum 18W
<b>Interface</b>	
Left Panel	3*USB ,SD Slot
Right Panel	CA Slot
Rear Panel	Tuner input, AV Out, Ethernet Port,RS232 Port, HDMI, DC IN
Front Panel	Standby key, IR Receiver, 1XUSB
<b>Physical Features</b>	
Operating Temperature	0°C-40°C
Storage Temperature	-10°C-65°C