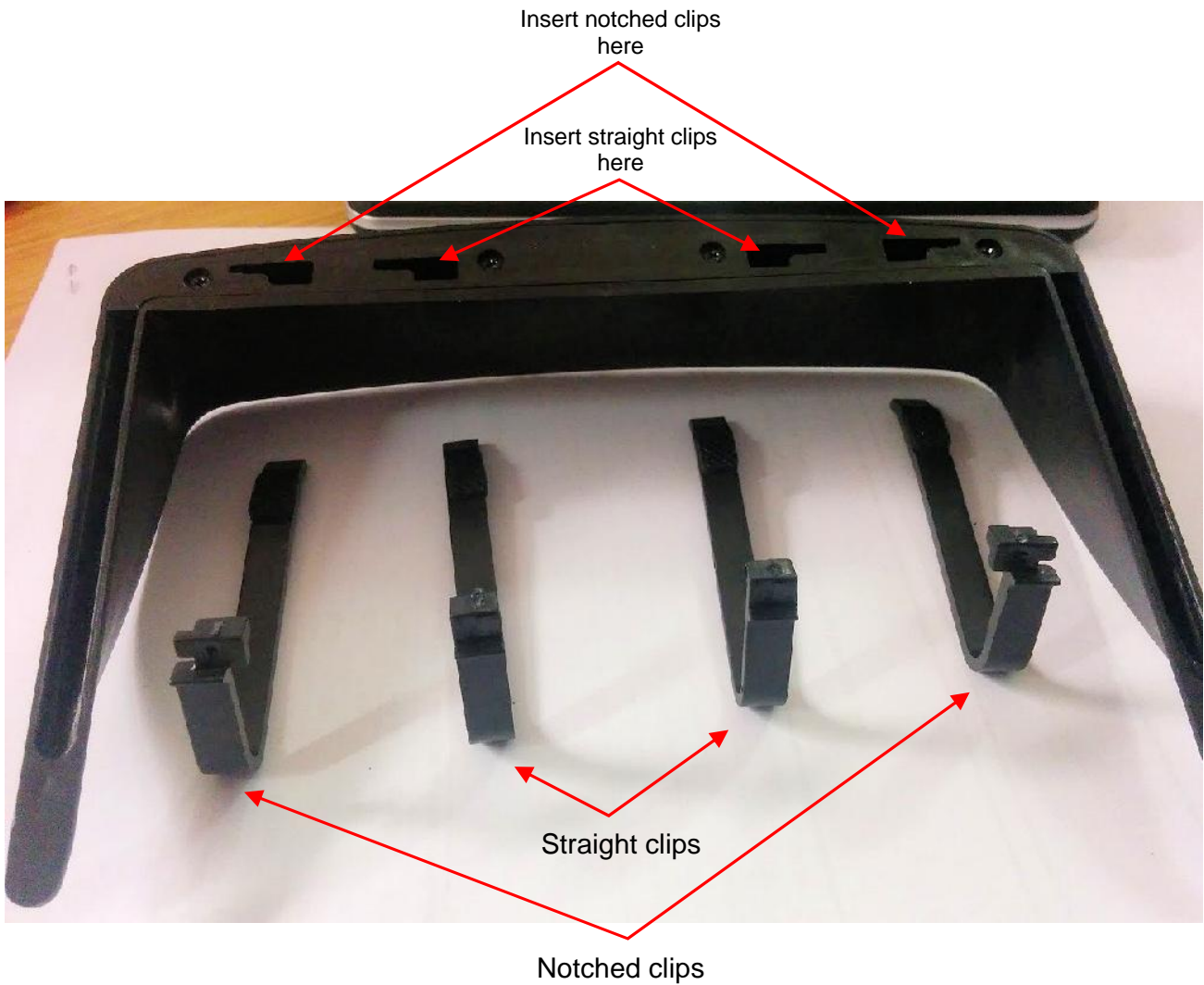


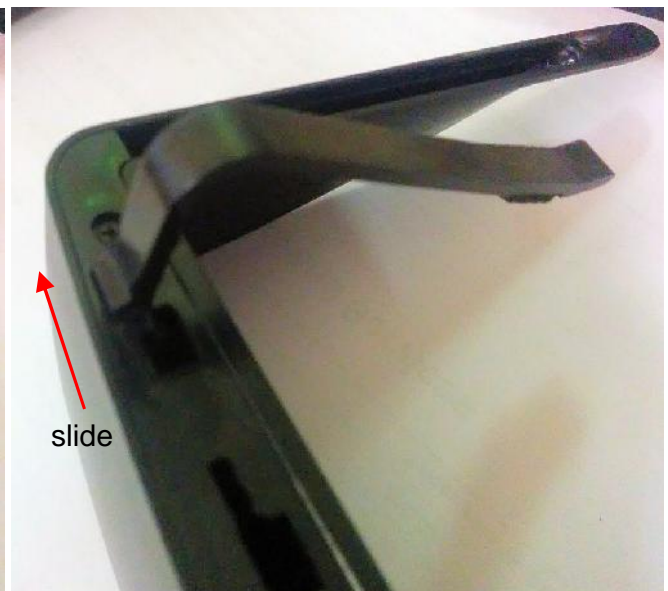
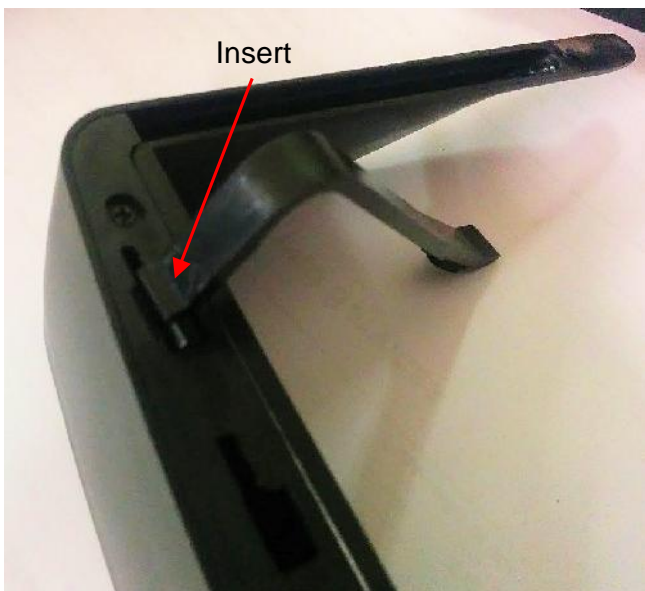
Assembling the Sat Nav Sun Visor

The visor comes with four clips, two have straight ends and two have notched ends. The ones with the notched ends should go in the outer pair of holes as indicated below.



Insert clip into larger part of hole

Slide into smaller part of hole to lock in position



Once all four clips are attached it should look as follows:



and you can now slide the visor onto the sat nav:



The final result:

