



FALCON PREDATOR EVO3
2 Way Security System
Installation Manual

FOR NATIONWIDE INSTALLTION SERVICE
CALL 0800 622 474

HELPLINE: 0906 700 10 20
(All calls charged at 50p/min)

Falcon Security Ltd. Unit 9 Tanning Court, Warrington, Cheshire, WA1 2HF, UK
Internet: <http://www.falcon-security.com> Email: support@falcon-security.com

1) Specification

| | |
|--------------------------------------|-----------------------|
| Working Voltage | Dc 10~16V |
| Working Frequency | 433.92 MHz \pm 1MHz |
| Code | Hopping Code |
| Output | |
| Arm | |
| C7-6 Gray/White <Channel 3> | <-> 200mA |
| C7-7 Green/White <Door Unlock 2> | <-> 200mA |
| C7-9 Yellow <Indicator Light> | <+> 15A |
| C7-11 Yellow/White <Indicator Light> | <+> 15A |
| C7-12 Purple <Siren> | <+> 1A |
| C7-13 Brown/White <Channel 2> | <-> 200mA |
| C7-14 Brown <Trunk Release> | <-> 200mA |
| C5 Red/Black <LED> | <-> 5mA |
| C2 Black/Green/Pin <Lock> | <+> 15A |
| C2 White/Blue/Orange <Unlock> | <+> 15A |
| C3 Black <Starter Kill> | 40/30A |

2) Main Features

| | |
|-------------------------------------|--|
| 01> Hopping code data transmission | Central Lock System |
| 02> Includes Two Way remote control | 10> Compatible with dual stage Central Lock System |
| 02> Power Saving transmitter | 11> 2-Way FM/AM transmission up to 1000/350 meters |
| 04> Code learning microprocessor | 12> Instant alert by buzzer or vibration |
| 05> Dual stage Shock Sensor | 13> Panic/Anti-Hijacking mode |
| 06> 5-separate trigger zones | 14> 10 programmable features |
| 07> 1 Auxiliary sensor port | |
| 08> 2 Auxiliary output ports | |
| 09> Compatible with all types of | |

3) LED Status Indicator

Slow flash : Arm / Alarm / Panic / Anti-hijack
Fast flash : Auto Re-arm
Steady flash : Last door arm / send message to controller
No light : Disarm mode

Note: Alarm will not accept the commands when sending a message to the controller.

4) Remote Control

01. Table of button functions

| Button | IGN OFF | IGN On |
|-----------------------|-------------------|-------------------|
| BTN #1 once | Arm/Disarm | Lock/Unlock |
| BTN #1 2 sec. | Panic | Panic |
| BTN #2 once | Channel 2 output | Channel 2 output |
| BTN #3 once | Vehicle Finder | Anti-hijacking(1) |
| BTN #3 2 sec. | | Anti-hijacking(2) |
| BTN #1+2 then BTN #1 | Mute Arm Mode | |
| BTN #1+2 then BTN#1+2 | | Valet mode |
| BTN #2+3 once | Boot release | Boot release |
| BTN #1+2 then BTN#2 | Channel #3 output | Channel 2 output |
| BTN #2+4 once | RC battery saving | RC battery saving |
| BTN#3+4 | Vibration mode | Vibration mode |
| BTN #5 Once | Flash Light | Flash Light |



02. Battery Saving

a) Pressing button #2+4 once will start the battery saving mode and the buzzer will sound to confirm. The remote control will enter battery saving mode 70sec. after pressing button #1 to disarm the system. Pressing any button during the 70 sec. or while under in battery saving mode will deactivate the battery saving mode till next time the system is disarmed.

b) Under battery saving mode, pressing button #2+4 once again will turn off the battery saving mode and the buzzer will sound to confirm.

03. Vibration and Audible Mode

Pressing button #3+4 once under any mode will switch between vibration or audible mode.

04. Flash Light

Press and hold button #5 for one second will turn on the flash light for as long as button #5 is pressed.

05. Powering on the LED Remote Control

When inserting the battery the buzzer of LED remote will sound and then the

blue/red/green LED and white flash light will flash for 0.5 sec. alternately.

06. Blue LED

- * Press any button except button #5 and the blue LED will flash for 0.5sec. and the battery power will be checked at the same time
- * Insufficient Battery power is indicated by:
 - Blue LED flashes 3 sec. then off
 - Buzzer sounds four times

07. Red LED

- a) When the system is armed the remote control will beep once and the red LED flash 15 sec. to confirm.
- b) When the system is disarmed, the LED remote will beep two times and the red LED will be off.

08. Trigger and Responses

a) Shock sensor triggers

- * When disarming the system:
If the shock sensor has been triggered during the armed mode, the Red LED will flash once for 15 sec. and buzzer sounds.
- * When the system is in armed mode:
The red LED will flash once for 15 sec. and the buzzer will sound for 15 sec. if the shock sensor is triggered.

b) Bonnet & Boot triggers

- * When arming the system:
The red LED will flash twice for 15 sec. and buzzer sounds if the bonnet/boot is not closed properly
- * When disarming the system:
If the bonnet or boot has been triggered during the armed mode the Red LED will flash twice for 15 sec. and the buzzer sounds when disarming the system
- * When the system is in armed mode:
The red LED will flash twice for 15 sec. and the buzzer will sound for 15 sec. if the bonnet or boot is triggered

c) Door triggers

- * When arming the system:
The red LED will flash three times for 15 sec. and the buzzer sound if the door is not closed properly
- * When disarming the system:
If the door has been triggered during the armed mode, when disarming the system the Red LED will flash three times for 15 sec. and the buzzer sounds.
- * When the system is in armed mode:
The red LED flashes three times for 15 sec. and buzzer will sound for 15 sec. if the door is triggered.

d) Ignition triggers

- * When disarming the system:

If the ignition has been triggered during the armed mode, when disarming the system the Red LED will flash four times for 15 sec. and buzzer sounds.

- * When the system is in armed mode:

The red LED flashes four times for 15 sec. and buzzer will sound for 15 sec.

5) Programming Remote Controls

The alarm system comes with one 2-Way 4 button remote control which is pre-programmed into the system memory. The alarm can support up to 4 remote controls, follow the steps below to enter code-learning procedure to program new remote controls.

- * Under the disarm mode

- * Turn the ignition switch ON/OFF 3

times (each time within 1 sec., or alarm system will ignore it) and stay in ON position

- * Siren will sound for 2 seconds, and the alarm will enter into code learning mode

- * Press button #1 within 10 seconds, the siren will chirp twice and the hazard lights flash twice to confirm the code has learned

- * Apply the same procedure for second, third and fourth remote controls

- * If the ignition is turned OFF or 10 seconds elapses between any of the steps then siren will chirp 4 times, the lights will flash 4 times, and the alarm will leave the code learning mode.

- * Once 4 remote controls have been programmed the alarm will automatically leave the code learning mode.

6) Feature Programming Options

With the alarm disarmed open the door

Switch the ignition on and off three times and keep it in the "On" position

The siren will chirp for two seconds, then the system will enter into the programming option mode

Within 10 seconds press button #1 the same number of times as the

function you wish to program. Press button #2 to confirm and the siren will chirp the same number of times to confirm the selected function.

Then set up the function by pressing button #1, #2 or #3

- * System will quit the programming option automatically after 10 seconds or if the ignition is turned off.

| No. | Function | Button #1 [Chirp once] | Button #2 [2 Chirps] | Button #3 [3 Chirps] |
|---|---------------------------------|---------------------------|-------------------------|-------------------------|
| 01. | Passive/Last Door Arming | Disable | Enable | xxx |
| 02. | Passive Locking | Disable | Enable | xxx |
| 03. | Smart Ignition Locking | Disable | Enable | xxx |
| 04. | Door Lock Time | 1 Pulse | 2 Pulse | 4 seconds |
| 05. | Alarm Time | 30 sec. | 60 sec. | Continuous |
| 06. | Interior Light Delay | Disable | Enable | xxx |
| 07. | Auto Re-arm | Disable | Enable | xxx |
| 08. | Dual Stage Unlock/Door Unlock 2 | Disable | Enable | xxx |
| 09. | Anti-Hijacking | Disable | Enable | xxx |
| 10. | CH3 Output | Disable | Enable | xxx |
| Remark: Factory Default <Gray Background / Button #1> | | | | |

7) Arm

7.1> With the alarm disarmed and the ignition off pressing button #1 will arm the alarm, the doors will lock and the siren will chirp once and the indicator lights flash once to confirm the arm status. The LED will turn on and flash slowly after 2 seconds.

7.2> If a door, the bonnet or boot were not closed properly when the system was armed the siren will chirp and the indicator lights flash three times, the doors will lock and the lights will flash once again and the siren will sound a long chirp and a short chirp to warn you.

8) Disarm/Override

8.1> With the alarm armed pressing button #1 will disarm the system, the doors will unlock and the siren will chirp twice and the indicator lights will flash twice to confirm. The LED will turn off.

8.2> Override – to disarm the system without a remote control (eg. In case of flat battery/lost remote), open the door and the alarm will sound, switch the ignition on and off 4 times to disarm (on-off-on-off-on-off-on-off).

8.3> The lights will keep on flashing until door or bonnet/boot is closed while the ignition is on, if doors, hood or trunk is opened.

9) Alarm Mode

9.1> If any installed sensors are triggered the system will enter alarm mode and the siren will sound and indicators flash unless the alarm is triggered by the first stage of the shock sensor in which case the siren will chirp 3 times only to warn intruders.

9.2> If the ignition is triggered (ACC is turned to "on" position), the system will enter the alarm mode until the ignition is turned off.

9.3> If doors, bonnet or boot are opened the siren will sound and stop after 30 or 60 seconds as pre setting of option 5 even if the door, bonnet or boot is still open unless option 5 set at 'continuous' in which case the siren will sound until the door, bonnet or boot is closed.

9.4> If the alarm is triggered, press button #1 once, the siren will chirp once, the

doors will lock (if unlocked) and the system remains in the arm mode.

10) Panic

Under any mode, press button #1 for 2 seconds, the system will enter into the arm mode. The indicator lights will flash and siren sounds.

11) Mute Arm mode

11.1> With the alarm disarmed press button #1 + #2 once, the lights will flash once, then press button #1 again within 1 second and the system will enter into the arm mode; the lights will flash once more to confirm and the doors will lock.

11.2> under the mute mode: if shock sensors are triggered, only the lights will flash. If the ignition, doors or bonnet/boor are triggered the siren will sound and lights flash and mute mode will be cancelled.

12) Valet Mode

12.1> With the alarm disarmed switch the ignition on and press buttons #1 + #2 once at the same time; the lights will flash once, within 2 seconds press button #1 + #2 once again at the same time, the siren will chirp once to confirm the system is now in valet mode. Use the same procedure to exit valet mode, and siren will chirp twice to confirm.

12.2> Under valet mode, only door lock and unlock can be operated by remote control and the indicator lights will flash once or twice.

13) Channel-2 output

13.1> Pressing button #2 once with the alarm armed or disarmed will activate channel-2 for 0.5 second (Negative pulse). If the alarm is armed the shock sensor will be bypassed for 8 sec. at the same time.

14) Boot Release

14.1> Pressing buttons #2 + #3 once at the same time will operate the boot release output. If the system is armed it will be disarmed.

15) Channel-3 output

15.1> When programmed as disabled: Pressing buttons #1 + #2 followed by button #2 will send a constant negative output through CH-3 until button #2 is released.

15.2> When programmed as enabled: Total closure output - A 30 second negative output will be sent through CH3 when pressing button #1 to arm the system, the shock sensor will be temporarily bypassed at the same time.

16) Remote Anti-Hijacking

16.1> With the ignition on, press button #3 once and the LED & lights will flash to warn intruders.

16.2> When the ignition is off press button #3 and the lights will flash for the programmed alarm duration and then the system will enter into the arm mode.

* Anti-hijacking flow chart is listed below.

17) Vehicle Finder

17.1> Pressing button #3 once will flash the indicators for 30 seconds. If the alarm is disarmed it will enter into the arm mode.

18) Passive/Last Door Arming

Whenever the ignition is switched off and the doors closed the alarm will enter the arm mode 20 seconds later. If passive locking is also enabled the doors will be locked.

19) Ignition Door Locking

19.1> With the alarm disarmed switching the ignition on will cause the doors to be locked automatically after 30 seconds; when the ignition is switched off the doors will be unlocked automatically.

19.2> The doors will not be locked if a door is opened within 30 seconds of turning the ignition on.

20) Interior light Delay

If Interior-Light Delay is enabled: When arming the system only the ignition will be activated immediately, the doors, bonnet, boot and shock sensor will be activated after 15 seconds.

21) Auto Re-Arm

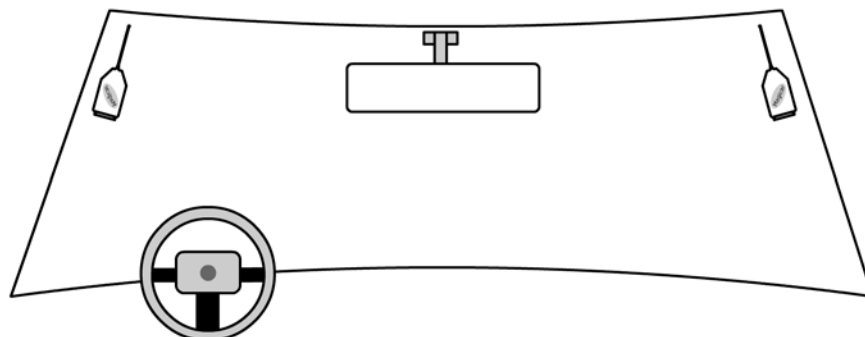
When Enabled: After pressing button #1 to disarm the alarm the LED will flash rapidly. If a door is not opened or the ignition turned on within 30 seconds the lights will flash once, the siren will chirp once and the system will enter into the arm mode.

22) Door Unlock 2

22.1> When Disabled: While disarming, door unlock & unlock 2 will be activated at same time.

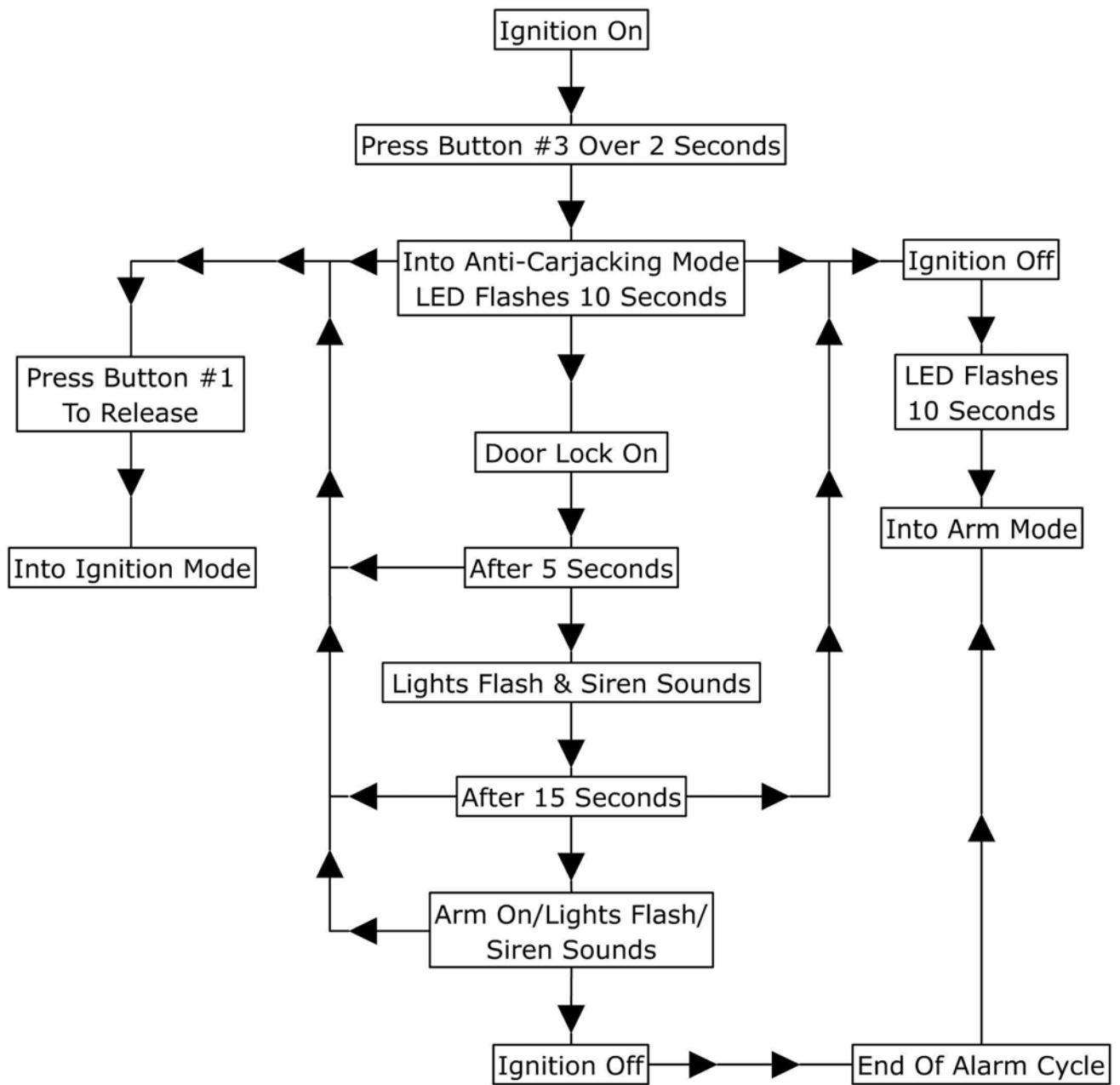
22.2> When Enabled: While disarming, press button #1 within 3 seconds to activate door unlock 2.

24) Suggested location to install the transceiver

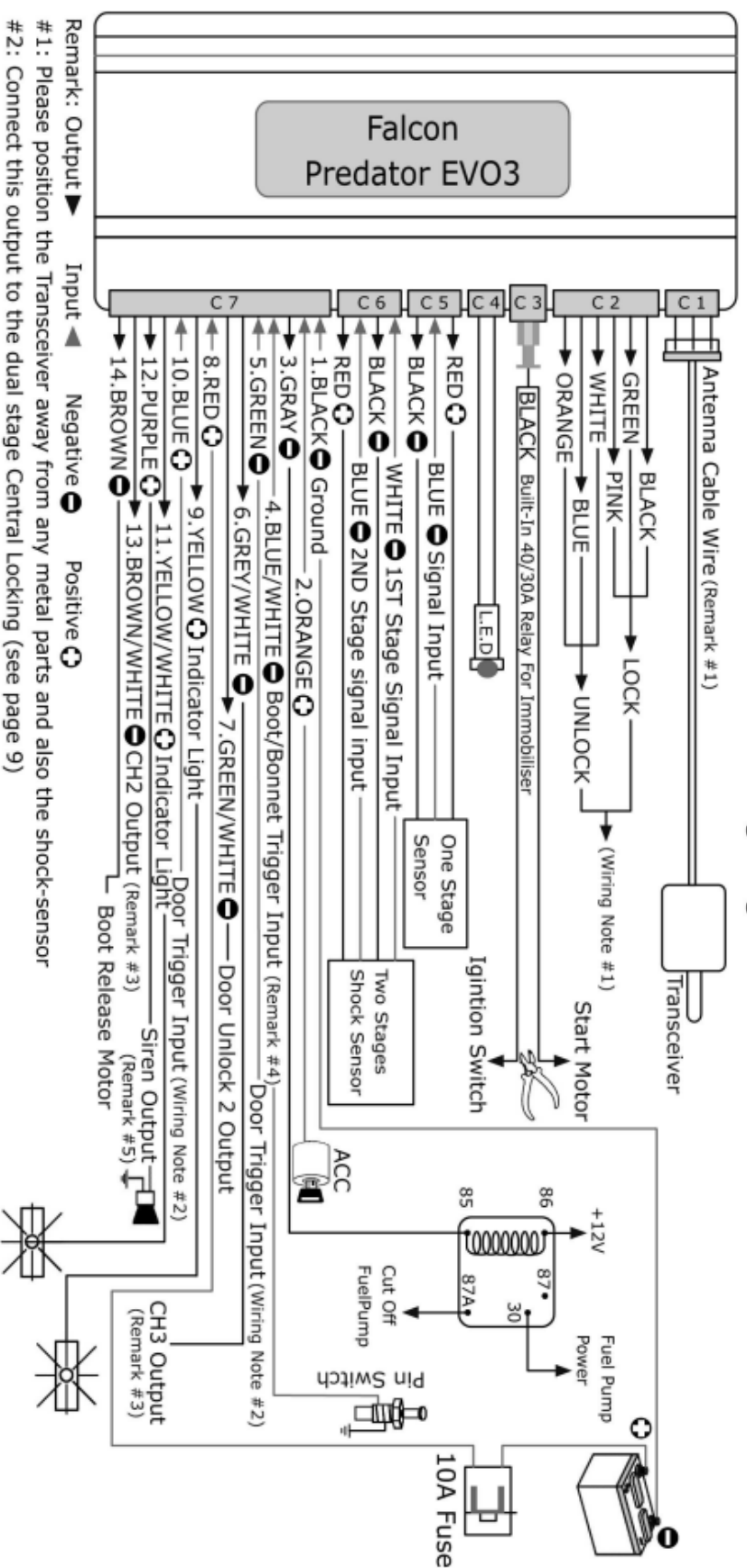


- * Install the antenna at the right or left upper of the windshield
- * Keep the antenna at least 5cm away from the car frame
- * Don't power on the main unit if the antenna is not connected
- * Keep the antenna at least 5cm apart from solar control window film

Anti-Carjacking Flow Chart



Falcon Predator EVO3 2-Way Paging Alarm Wiring Diagram



Central Locking Wiring Diagram

Diagram #A
Original built-in central door locking

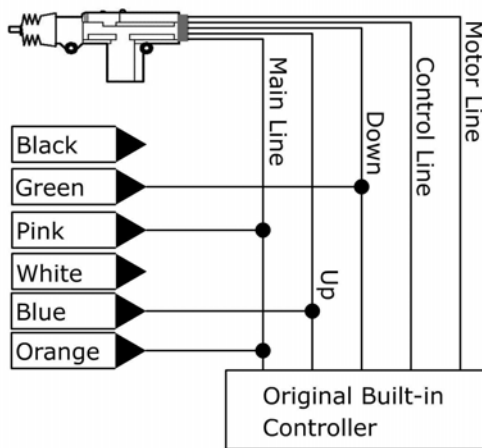


Diagram #B
Original built-in central door locking & electric power lock switch where installed
For example: CHRYSLER

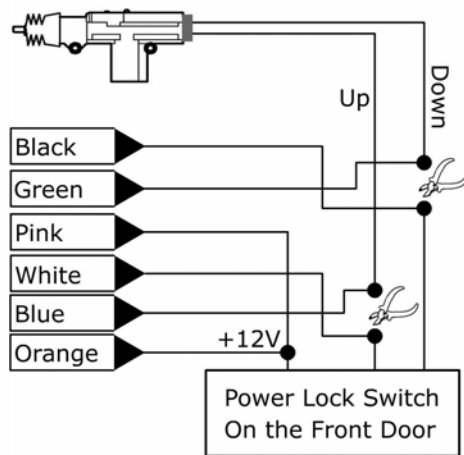


Diagram #C
Original built-in central locking & where only a switch existed in the drivers door.
A motor is required

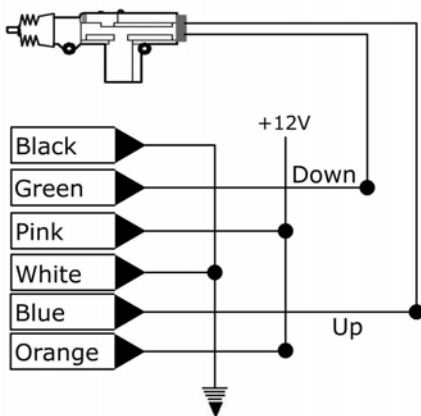
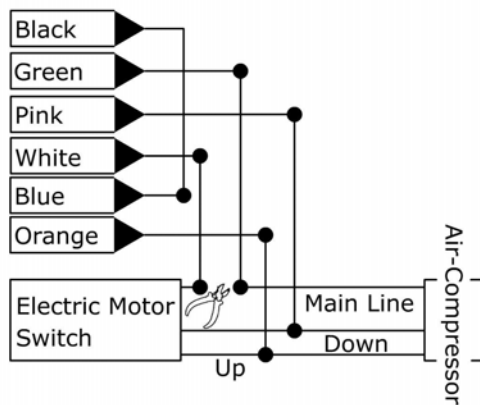


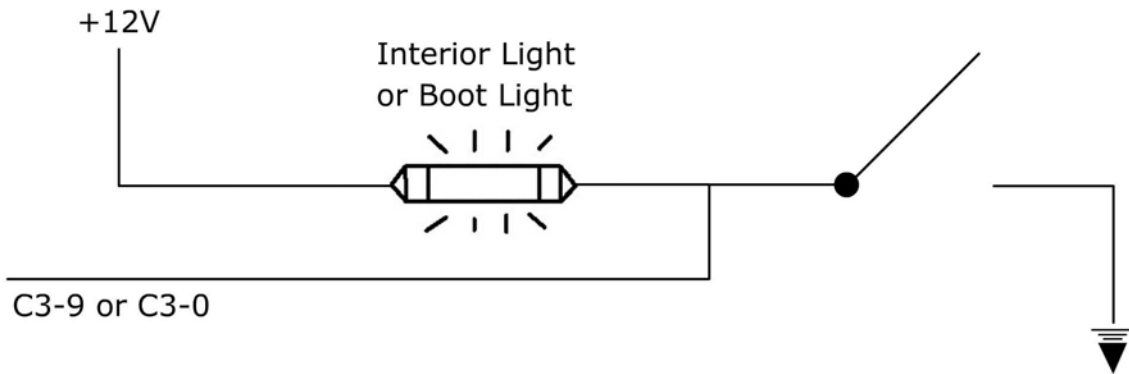
Diagram #D
Original built-in central locking using a compressor to control the switch.
For example: BENZ, AUDI
(Note: Active time 3.5 sec.)



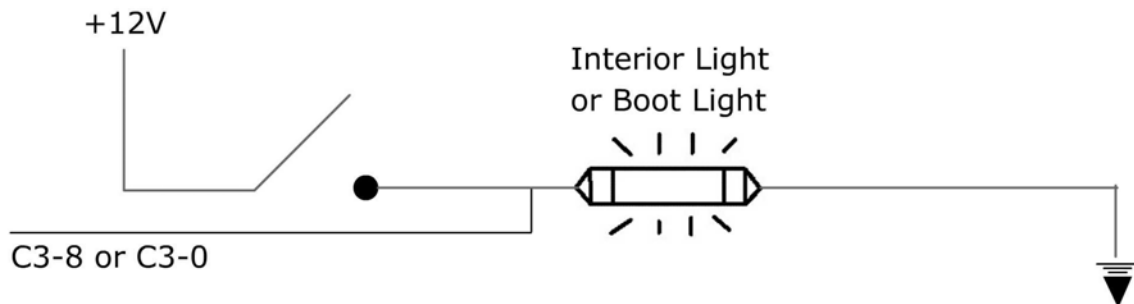
Wiring Note #2

Connect the C3-9 Green Door-trigger wire to the interior light or C3-0 Blue Bonnet/Boot trigger wire to the boot light as follows:

Negative Trigger: When the vehicle's Interior Light or Boot Light is Negative Trigger



Positive Trigger: When the vehicle's Interior Light or Boot Light is Positive Trigger



Wiring for Two Stage Adding Actuators

